



PROCES VERBAL de l'assemblée générale ordinaire de l'IEFC du 1^{er} mars 2002 à Lisbonne

L'assemblée générale de l'IEFC s'est tenue dans l'amphithéâtre de l'ISA à Lisbonne le vendredi 1 mars 2002.

Elle a été présidée par Michel Arbez et Margarida Tomé.

Au cours de cette assemblée générale, 37 personnes étaient présentes (liste jointe en annexe 3), une feuille d'émargement des personnes présentes a été établie. 18 des 20 organisations membres étaient représentées :

AFOCEL : procuration à Yves Lesgourgues
CAPC : Procuration à Christian Pinaudeau
CEF : Pedro Ochoa
CIF : Fina Fernandez
CRPF Aquitaine : Yves Lesgourgues
EFN : Isabel Quereiquino
ENITAB : Etienne Saur
ESAC : Fernando Pascoa
FERG University College Dublin : Ted Farrel
Gestion Ambiental, Viveros y repoblaciones de Navarra : Carmen Travers
IKT : Daniel Saenz
INRA : Jean-Michel Carnus
Negociado de experimentacion y sanidad forestal : Fernando Puertas Tricas
NEIKER : Enrique Reiter
TRAGSA : Beatriz Cuenca
UCP : Procuration à Margarida Tomé
Université de Saint-Jaques de Compostelle : Augustin Merino
USSE : Christian Pinaudeau

Ont été soumises au vote les délibérations suivantes :

D1. Le rapport moral du président M. Arbez (Annexe 1) : **Approuvée à l'unanimité**

D2. Le Rapport financier du trésorier M. Turrado, présenté par le directeur C. Orazio (Annexe 2) : **Approuvée à l'unanimité**

Le bureau sortant a démissionné à l'issue de la durée normale de son mandat, et le nombre de postes ouverts est passé de 6 à 8.

D3. L'assemblée a **approuvé à l'unanimité** la désignation du bureau suivant : Margarida Tomé, Christian Pinaudeau, Daniel Saenz, Fernando Puertas Tricas, Jean-Michel Carnus, Joao bento, Augustin Merino, Yves Lesgourgues

Réparti selon les fonctions suivantes :

Titre	Nom:	Signature
Présidente	Margarida Tomé	
Trésorier	Christian Pinaudeau	
Secrétaire	Daniel Saenz	
Vice-président	Fernando Puertas Tricas	
Vice-président	Jean-Michel Carnus	

D4. Pour concilier efficacité et droit, les personnes habilitées à faire fonctionner le compte n°66000134309 ouvert au Crédit agricole de Saint-Jean d'illac sont : Margarida Tomé (Présidente), Christian Pinaudeau (Trésorier) et Jean-Michel Carnus (Vice président) : **Approuvée à l'unanimité**

D5. Madame Margarida Tomé (Présidente) est habilitée à ouvrir un compte au Portugal au nom de l'IEFC: **Approuvée**



Ont été approuvées les résolutions suivantes :

R1. L'adhésion de l'IIEFC à l'EFI (European Forest Institute) : personne n'a souhaité remettre en cause l'adhésion de l'IIEFC à l'EFI, l'IIEFC sera donc membre de l'EFI en 2002

R2. L'IIEFC doit tout mettre en oeuvre pour participer aux événements internationaux majeurs que sont : la conférence de Vienne (4ème Conférence pour la protection des Forêts en Europe), le congrès forestier mondial de Montréal, la conférence internationale du FNUF sur les forêts de plantation en Nouvelle Zélande : **Adoptée à l'unanimité.**

R3. la prochaine assemblée générale de l'IIEFC se tiendra à l'ENITA de Bordeaux, la date correspondra au colloque final du projet IMACFORD (autour du 1er mars, 2003).

Ont été discutés les points suivants :

- Le nombre des membres du bureau est passé de 6 à 8 en réponse à une demande de plus forte représentativité régionale.
- L'adhésion à l'EFI : les membres de l'IIEFC et l'IIEFC lui-même cotisent à l'EFI. Il faudrait envisager un système permettant d'éviter cette double cotisation : tarifs préférentiels pour les membres, adhésion en groupe, ...
- Le montant de l'adhésion à l'IIEFC reste inchangé 154 Euros. Les membres n'auront à remplir le bulletin d'adhésion qu'une seule fois et devront envoyer un courrier lorsqu'ils ne veulent plus faire partie de l'association. Il n'est donc plus nécessaire de renvoyer un bulletin d'adhésion tous les ans.
- Changement de statut de l'IIEFC : il apparaîtrait souhaitable d'introduire dans les statuts la notion de membre sympathisant ou de membre associé. Mais avant de modifier les statuts, nous souhaitons voir si la possibilité de devenir une association de droit européen se met en place rapidement, ou si l'IIEFC reste une association de droit français.
- Le site internet peut être traduit dans plusieurs langues à distance; Peu de gens sont volontaires pour traduire... La base de données-adresses, avec les coordonnées des scientifiques du réseau sera mise en ligne dans l'intranet.
- Etienne Saur (ENITA) est intéressé par la mise en place d'une bourse d'échanges pour les étudiants, dès que nous aurons plusieurs personnes prêtes à faire vivre ce projet nous pourrions le mettre en place.
- Le travail d'Antoine Colin sur la gestion durable dans les régions de l'arc atlantique est disponible dans l'intranet. Tous les commentaires sont bienvenus avant de le rendre disponible sur Internet. Doit-il être traduit en espagnol et portugais?
- L'atlas forestier avance, il n'est prévu qu'une version à dominante anglaise pour l'édition papier. Une version multilingue est prévue sur internet.
- Amelie Castro, directrice d'EUROSILVASUR, a proposé d'accélérer les remboursements des frais de déplacement, en envoyant à Christophe Orazio copie des pièces transmises au responsable régional. **Il est urgent de renvoyer les justificatifs**, et notamment les feuilles de temps pour les membres IIEFC afin de justifier du cofinancement des partenaires du projet EUROSILVASUR.
- Pour INTERREG, il va falloir demander aux organismes de cofinancement les attestations avant le dépôt du projet!
- IMACFORD va démarrer en Mai, il est important de trouver des correspondants pour le compartiment qualité des bois et économie. Le groupe « genetica » servira de référence pour le compartiment production de matériel végétal.

Lisbonne le 08/03/02

La Nouvelle Présidente
Margarida Tomé

Le président Sortant
Michel Arbez

RAPPORT MORAL

« Monitoring and sustainable development of cultivated forests in South Atlantic Europe »

www.iefc.net

Chairman Annual Report (March 2001-February 2002)

M. Arbez

1. Brief history

The European Institute for Cultivated Forest (IEFC), was established as an association, in 1998, on the behalf of the Southern European Forest Owner Association (USSE), essentially funded by the « Eurosilvasur » European project, with the aim to develop and to transfer the scientific knowledge related to the sustainable development of cultivated forests. This project, specifically dealing with plantations in South Atlantic Europe, was identified as Regional Project Centre by EFI (European Forest Institute). At the same time, the executive Board meeting of IEFC, held in November 1999, in Lourizan (Galicia), appointed Christophe Orazio as Director, to plan, coordinate and follow up the interregional activities between Bordeaux, Lisbon, Santiago and Vitoria, as well as to initiate and to develop new international cooperations (Finland, South America, New Zealand). At the moment, 19 member organisations participate to IEFC, which means more than 70 scientists co-operating to the different tasks of the network

.2 Objectives

South Atlantic European regions from Portugal, northern Spain and south-western France represent 16 millions inhabitants, their forests cover around 6 millions hectares and collect annually more than 20 millions m³ of wood. Some of the fast growing species used in plantation are common within these regions:

Maritime pine covers around 2.3 millions ha between Aquitaine (1 M ha), Portugal (1 M ha) and Galicia (0.3 M ha). Eucalypts cover 0.9 M ha equally shared between Portugal and Galicia. Poplars represent 0.1 M ha. Most of these forests belong to private owners grouped into professional organisations (USSE, SYSSO, AFG, Forestis...)

The fast growing species thrive well under mild and moist climates: growth can reach more than 10 m³/ha/year (maritime pine in Aquitaine, Radiata pine in Euskadi) or even 15-20 m³/ha/year (Eucalypts in Portugal and Galicia, Poplars on rich soils of alluvial valleys everywhere)

Well integrated in the regional economies and cultures, these cultivated forests can sustainably contribute to the economic development, employment in the rural zones, and land management of those regions, as long as sufficient research effort is put in place to improve the general understanding and knowledge on:

- Biogeographic and socio-economic characterisation of the forest regions and regional forestry sectors;

- Wood resources and predictive tools such as models which allow prediction of wood volumes and quality according to silvicultural and biological factors ;
- The effects of those factors on the long term equilibrium of plantation forest ecosystems and health;
- The appropriate level and systems of monitoring (biological and socio-economic factors) and the definition of a certification procedure for the sustainable management of plantation forests and of the wood products derived from those forests.

Our aim is to synthesise the knowledge on mechanisms and models in these research fields, as well as to coordinate and develop appropriate monitoring systems. It is also to adapt the criteria and indicators derived from the Helsinki and Lisbon Conferences, to propose relevant recommendations towards sustainable management and development of the forest-wood industry in these regions. Such an integrated technical analysis must contribute to give stronger scientific bases for the forest certification processes, now on the way in Europe. Such methods and concepts will be transferred and taught to forest owners, managers and students through workshops, training sessions and university courses (DESS « Forêt cultivée » Université de Bordeaux IV, Cursos Internacionales Menendez Pelayo Santiago and Santander). Communication is organised mainly using the internet site of IEFC, "La Lettre de l'IEFC" distributed on the same channel, as well as occasional information's on regional radio and television broadcasting stations (USSE, professional organisations). It is expected that this effort of communication towards the public opinion will reduce the existing gap between a wood producing forest and an ideally natural forest.

3. Member organisations

In 2002, 20 organisations formally belongs to IEFC:

Association Forêt CELLulose, AFOCEL South West Station, France
ESAC Coimbra, Portugal,
Negociada de Experimentacion y Sanidad Forestal de Pamplona, Navarra, Spain,
Gestion Ambiental y Repoblaciones de Navarra, Spain
Institut National de Recherche Agronomique-Recherche forestière, INRA-Bordeaux, France
Ecole Nationale des Ingénieurs des Travaux Agricoles, ENITAB, Bordeaux, France
Universidade Catholica Portuguesa de Porto, Portugal
Nekazal Ikerketa Tecnologia (IKT), Vitoria, Euskadi, Spain
Estacion Florestal National (EFN), Lisbon, Portugal,
Empresa Nacional de Celulosa (ENCE), Galicia, Spain,
Instituto Vasco de Investigation y Desarrollo Agrario (NEIKER), Vitoria, Euskadi, Spain,
Universidad de Santiago de Compostela, Galicia, Spain,
Centro de Investigacion Florestais e Ambientais (CIFA), Lourizan, Galicia, Spain,
Empresa de Transformacion Agraria, Madrid, Spain
Centro de Estudos Florestais de ISA, Lisbon, Portugal
Union des Sylviculteurs du Sud de l'Europe, USSE, International,
Université de Bordeaux IV-Centre d'Analyse Politique Comparée (CAPC), Bordeaux, France,
Centre Regional de la Propriété Forestière d'Aquitaine (CRPF Aquitaine), Bordeaux, France,
University College-Forest Ecosystem Research Group, Dublin, Ireland
Universidad de Tras os Montes

This consortium is managed, as an Association, with an executive Board of 6 members (of whom, from the creation to now: Chairman Michel Arbez-France, Vice-Chairwoman: Pr. Margarida Tome-Portugal, Vice-Chairman: Pr. Jose Perez Vilarino-Spain). The headquarter is

located in Bordeaux, with 3 Regional Antennas in Lisbon, Santiago de Compostela, and Vitoria.

The annual budget of IEFC, was around 110 000 Euros on the period March 2001-February 2002. Most of the financial corresponded resources came from the European project « Eurosilvasur » and practically half of the expenses originated from the salaries (mainly the Director's salary).

4. The project and its implementation

The thematic work programme is structured through several working groups and sub groups:

- **0 Atlas of forests in South Atlantic Europe** (Co-ordination: Jose Antonio Ribeiro Lopez ESAC, Coimbra, Portugal). This document will present on line, on the IEFC web site, comprehensive information's covering biogeographic descriptions, areas, repartition from nature of property, wood resources and production, criteria and indicators planned to monitor and to certify the forest management, with the corresponding statistic tables and thematic maps necessary to illustrate the description of forests in this part of Europe. The electronic publication planned for this document will be achieved at the end of the second half of 2002.

- **1 Models, indicators and monitoring systems** (Co-ordination: Pr. Margarida Tome, ISA Lisbon, Portugal)

1.1 Growth models, process based models and network of permanent monitored plots (Co-ordination: Pr. Margarida Tome, ISA-Lisbon, Portugal)

This group uses mail exchanges and open periodic workshops to achieve its objectives: the first international workshop was successfully organised in Bordeaux in September 2000. The programme of talk and discussions was attended by 54 participants from 12 countries. The proceedings have been already published by EFI (see section 6). The second workshop is planned in ISA-Lisbon on 6-8 June 2002, in connection with IUFRO, on « Incorporating forest growth models into decision support tools for sustainable forest management », it will be mainly devoted to practical applications. The work of the group is completed by setting up and updating a « forest model data bank », organised and managed by Christophe Orazio (IEFC Director) and Celine Meredieu (scientist, INRA Bordeaux). This useful database is already opened and functional on www.iefc.net. The programme of the sub-task includes exchanges of methods and protocols regarding data collection, between two monitored permanent plots of maritime pine plantation forests in France (INRA) and Portugal (ISA)

1.2 Genetic diversity and biodiversity (Co-ordination: Maria-Helena Almeida, ISA-Lisbon, Portugal)

A directory of organisations, researchers and programmes dealing with genetics and forest tree breeding in South Atlantic Europe, is now practically achieved and the corresponding data will be available on IEFC intranet. This electronic directory is completed, for the interested part of the consortium, by an enriched bank of microsatellite markers of maritime pine. This co-operative bank, useful for genetic analysis, varietal tests, as well as marker-assisted-selection, will be very soon operational.

Preliminary works concerning biodiversity in plantation forests was initiated, including literature review (see M. Arbez, section 6), inventory and practical test of

feasibility of indicators able to evaluate biodiversity in plantation forests (see Jean Charles Samalens, section 6), as well as experimental measures of impacts of the level of forest tree species biodiversity, on the damages from insects and diseases in maritime pine forest (H. Jactel, INRA Bordeaux scientist and Biscarosse-Pontenx experimental forests) .A more comprehensive work on this last experimental aspect is planned for the future year, through the expected INTERREG project.

1.3 Forest Health (Co-ordination: Hervé Jactel, INRA-Bordeaux, France)

The English electronic edition of the « Guide of insects and disease damaging forests in South Atlantic Europe » was prepared by Inge Van Helder and will be available on www.iefc.net at the end of March 2002 (see section 6)

1.4 Forest Soil Conservation (Co-ordination: Jean Michel Carnus, INRA-Bordeaux, France).

The group was initiated in 2001 and met twice. It prepares a forest soil information to complete the Atlas, associated with recommendations concerning sustainable management of forest soils: a key element for a safe future of the forest. The three main topics of interest for co-operation have been identified: (i) forest soil indicators, (ii) best management practices (iii), biowaste recycling in forestry.

2 Regional transcription of a forest sustainable management policy, and its technical tools (indicators), at the regional scale. (Co-ordination: Daniel Saenz, IKT, Euskadi, Spain)

A compared analysis of laws and rules dealing with forest sustainable management in the different administrative regions of South Atlantic Europe was performed in 2001-2002 by Antoine Colin (IEFC/ENITAB report, see section 6).

Moreover a network of model forests, concerning 10 experimental sites, with specific thematic approaches and data collection protocoles, was agreed between the Regions and will be proposed to the next INTERREG call for proposal. This approach, involving several « Regional Forest Observatoires » will allow to choose the indicators, the most feasible and regionally the most relevant, to evaluate and to monitor the sustainability of the forest management.

3 Forest socio-economics (Coordination: Pr; Jose Vilarino, Santiago University, Galicia, Spain)

A first study on « Origin, aims and functioning of the forest owner associations » is now coordinated by Pr. Americo Mendes (Porto Catholic University, Porto) in Portugal. The achievement is planned for the end of July 2002.

A second study is on the way with the coordination of ENITA Bordeaux (Coordination: Jean Paul Guyon, Pr. ENITAB) on the perception of the forest importance in the Aquitaine public opinion. The achievement is also expected at the end of July 2002.

A third study initially planned for the coming months with the contribution of CEMAGREF and CRPF Bordeaux, on the social and economic characterisation of the private forest owners of Aquitaine, would have probably to be postponed by lack of interested student.

5 Publications and dissemination of results

Several activities of IEFC have to be reported in this field:

-Proceedings

« Tools and methodologies for fire danger mapping », proceedings of the workshop organised by IEFC and UTAD, March 2001, Vila Real (Portugal),

« Models for the sustainable Management of Temperate Forests », EFI Proceedings No.41, 2001, J.M. Carnus, R. Dewar, M. Tome and C. Orazio Eds

« Risk Management and Sustainable Forestry », EFI Discussion Paper of the Bordeaux scientific seminar of September 2001, to be soon published,

« Strategies de Prevention des Incendies dans les Forêts d'Europe du Sud », Proceedings of an IEFC/USSE workshop, Bordeaux, January 2002

-Reports

J.C. Samalens, 2001, « Estimation d'indicateurs de gestion durable des forêts: étude de faisabilité à l'échelle d'une petite région forestière », ENITAB report.

A. Colin, 2002, « Stratégie régionale de mise en oeuvre de la gestion durable des forêts du sud ouest de l'Europe », ENITAB report, already available on line, in French, on www.iefc.net.

-Technical paper

M. Arbez, « Cultivated forests of south Atlantic Europe, potentials and research needs », EFI News, 2/ 2001

-E-letter:

« La lettre de l'IEFC », 5 issues already published on the web site www.iefc.net

-Electronic publications

Guide of insects and diseases-damaging forests in South Atlantic forests, with pictures and description, biology and control methods for 63 species of insects and fungus, English version to be published in March 2002.

« Models for forests », database of models used or available for trees and forests, C. Orazio co-ordinator, already on line.

"Atlas of forests in South Atlantic Europe", in four languages: Spanish, French, Portuguese and English, on the IEFC web site in July 2002.

-Conference

« Gestion sostenible de los bosques cultivados », M. Arbez, Seminario Asociacion Forestal de Cantabria: Economia y cultura de los Bosques de la Europa del Sur, Santander, 24-25 July 2001.

-Special services

IEFC offers to part of its consortium an « enriched Library of Microsatellite Markers of Maritime Pine », expected to be used for any genetic diversity analysis and/or marker assisted selection related to this species

-Education

Lectures DESS "Environnement, Developpement sylvicoles et gestion de la Forêt cultivée", Université Montesquieu Bordeaux 4: Sustainable management of forest genetic diversity and biodiversity, criteria's and indicators of forest sustainable management: 6 hours, M. Arbez and C. Orazio.

Lectures ENITAB (High School of Engineers for Agriculture, Bordeaux): European forests, 2 hours, C. Orazio

6 Lessons drawn from the Regional Project Centre trial (RPC/EFI)

IEFC clearly benefited with an amplifying effect of the EFI networking, either for enlarging input information's concerning announcements of forest events in Europe, or to better disseminate results of IEFC activities on the RPC and the whole EFI networks. In this sense, links between IEFC and EFI websites, and participation to common conferences or workshops were really successful. I hope that the views (studies, statistics, forest policies, data) from South Atlantic European forests and foresters brought to EFI by IEFC, resulted in a better understanding of the forest questions in this part of Europe. The RPC trial clearly

resulted in a strengthening of the forest and forest research networking and lobbying in Europe.

The poor balance "efficiency/EFI reporting time", and the lack of any funding of the RPC activities by EFI, invite to find new co-operation formulas. More frequent connections and co-operations between EFI partners, as the EFI/RPC meeting organised for the first time in Bordeaux in September 2001, and the future funded co-operative project IMACFORD, associating the existing RPC's and EFI in a common thematic project, will certainly improve the situation.

7 Scientific and practical value of the results and innovations

Models for forests

This performing working group focused on two main tasks:

- Edition and publication by EFI of the proceedings of the first workshop. This workshop succeeded: (i) to review the current use of models in understanding and quantifying the sustainable management of plantation forests; (ii) to encourage links between tree and soil modellers; (iii) to encourage links between researchers and end-users; and (iv) to identify priorities for future research and collaboration. The proceedings present an overview of recent progress in developing and applying models to problems of sustainable forest management. The papers cover the full range from detailed, process-based ecosystem models to empirical growth and yield models and decision support tools. The work achieved in this workshop will be completed by a second one, planned in Lisbon, from 6 to 8 June 2002 and focusing on « Incorporating forest growth models into decision support tools for sustainable forest management »
- Setting up a forest model data base, with an on line inventory of any existing forest models (category: growth/architecture/process based...,input, output, authors, related literature, concerned forest species...), already available on www.iefc.net (item activities)

Genetic diversity and biodiversity

The work in this field, will practically results in a comprehensive inventory of « who is making what » in genetic analysis and forest tree breeding concerning Pines, Eucalypts, and Poplars in South Atlantic Europe, completed by an enriched library of microsatellite markers of maritime pine, usable for genetic analysis and marker assisted selection.

Additionally, IEFC prepared a literature review on genetic diversity and biodiversity in planted forests (EFI scientific seminar, M.Arbez, Lisbon 2000) and discussed during the second workshop of its group genetica « how to associate advanced techniques in biology and sustainable management of planted forest » (Lisbon, February 2002).

Forest soils

Created recently from the idea that the key of forest sustainability lies in soil fertility, this recent group focused first on the forest soils information's, to be integrated in the « Forest Atlas of South Atlantic Europe » available on the IEFC web site on April 2002.

Forest health

The major realisation in this field will concern the « Guide of forest insects and diseases in south Atlantic Europe », to assist foresters in determination, control and prevention of sanitary damages. The English version of this guide is ready today and available on the IEFC web site, soon on March 2002. The French, Spanish and Portuguese versions will follow later on, first on line, then on paper edition.

Indicators of sustainable management

The IEFC study performed by J.C. Samalens and published in September 2001, as ENITAB student report, gives first a literature review on the subject. Moreover, it presents a personal expertise on the feasibility of the usually proposed indicators, from the practical availability of the data, at the scale of a small forest region near Mimizan, in the French Landes of Gascony.

Regional policy of sustainable management

A recent analysis published in French by A. Colin (February 2002), during his stay at IEFC headquarter, as ENITAB student, presents a comprehensive view of legal texts and administrative rules, used for the sustainable forest management, at national and regional level, in south west France, northern Spain, and north and central Portugal. Moreover, the author describes the updated situation of the forest certification (PEFC and FSC) in the different regions of concern.

Planted forests, forestry and society

The review published by Arbez, in the EFI News (2001, n°2) presents the planted forests in South Atlantic Europe and their economic and social aspects. The subject is now being completed in three directions:

- Origin, aims and functioning of private forest owner associations (Pr. Americo Mendes, Catholic University of Porto, Portugal),
- Characterisation of social and economic behaviour of the private forest owners, using ad'hoc questionnaire and sample survey (CRPF and CEMAGREF Aquitaine). This planned study would be only feasible provided the requested student is found.
- Perception of planted forest importance in the public opinion of Aquitaine (ENITAB, and Bordeaux DESS), study planned to begin in March 2002.

8 Future prospects

■

The way is clear for the coming months:

Till the end of July 2002, we have to satisfy our first commitments, which means the achievement of the tasks planned and described within Eurosilvasur and the EFI/RPC project, the preparation of the related technical and financial reports, associated with the corresponding proofs of expenses.

From May to December 2002, our energies will be shared between:

- Participation to the European project IMACFORD led by EFI, on « Improving and advancing co-ordination of forest research and development in Europe », as a contribution to the definition of the future ERA (European Research Area) in the field of forest sciences. This project is also the opportunity for us, to prepare an « excellence research network », associating the best-qualified laboratories for 6 years, around an interdisciplinary question: « how to combine technological innovation and forest sustainable management », regarding genetic diversity, silviculture and wood products.
- Organisation of meetings on forest sustainable management, with the Spanish and French partners of the « Pyrenean working community ».
- Organisation of several field workshops in Aquitaine, within a new funded project from « France Foundation » on « how to manage together the country land », around societal perception of the cultivated forest and prevention of conflicts between owners and other forest users (hunters, walkers, bird watchers...)

Final preparation of our INTERREG proposal, concerning a network of 10 experimental forests, to test the practical feasibility, the scientific pertinence and the costs of the proposed indicators to evaluate the sustainable quality of the forest management, at sub-regional and regional scale.

As the stepping down chairman, my views are fuzzier **after 2003**, normally, and of course because it will be the responsibility of the next executive board. Nevertheless, we can freely imagine some general orientations for the future:

IEFC will play an increasing role at the interface research-development for the forestry sector of South Western Europe and in strong partnership with the forest industry. Improving the scientific knowledge in relation with the sustainable development of cultivated forests and transferring this knowledge to the forest industry and end-users will remain our main goal. In the next four years, the scientific themes identified today will continue to be developed and extended to include wood quality and wood products.

Three main objectives could guide our strategy for the mid-term (2003-2005):

- developing an integrated interdisciplinary research network for the sustainable management and utilisation of fast growing forest resources,
- improving monitoring procedures, SFM indicators and transfer of information to end-users through model forests in link with interregional development,
- facilitating links with tertiary education and improving co-ordination of predoctoral and doctoral training in the forestry sector.

In terms of organisation, IEFC will probably need to be consolidated as an European based association and should be able to extend its membership in the coming years. Requirements of the 6Th European framework for research (ERA) may necessitate modifying the administrative structure of IEFC. In parallel, collaborations and exchange of people with EFI and with other RPC's will need to be (re)structured and developed, in particular with our Solsona colleagues.

These are the main results of the leaving team, associated with some orientations for the coming months. As member organisations, you shall have to adopt, reject or amend this report.

But from my side, I cannot leave without to tell you, how I was pleased and proud to chair our association since its creation in 1998. I met new friends, and discovered some of the profitable aspects of the sustainable development concept, applied to the forest management. I will also address my warm thanks to USSE, Eurosilvasur and EFI, to the guys and girls working with, and to all IEFC member organisations, who largely contributed to the whole result, during this susceptible youth period. And last but not least, I will address my friendly thanks to Christophe Orazio, who was, day after day, the efficient organiser of our activities.

Michel Arbez

RAPPORT FINANCIER

Solde Initial au 1 Mars 2001 : 15306 Euros (Avance eurosilvasur versée fin février)

Bilan réalisé le 22/02/02

Répartition par poste

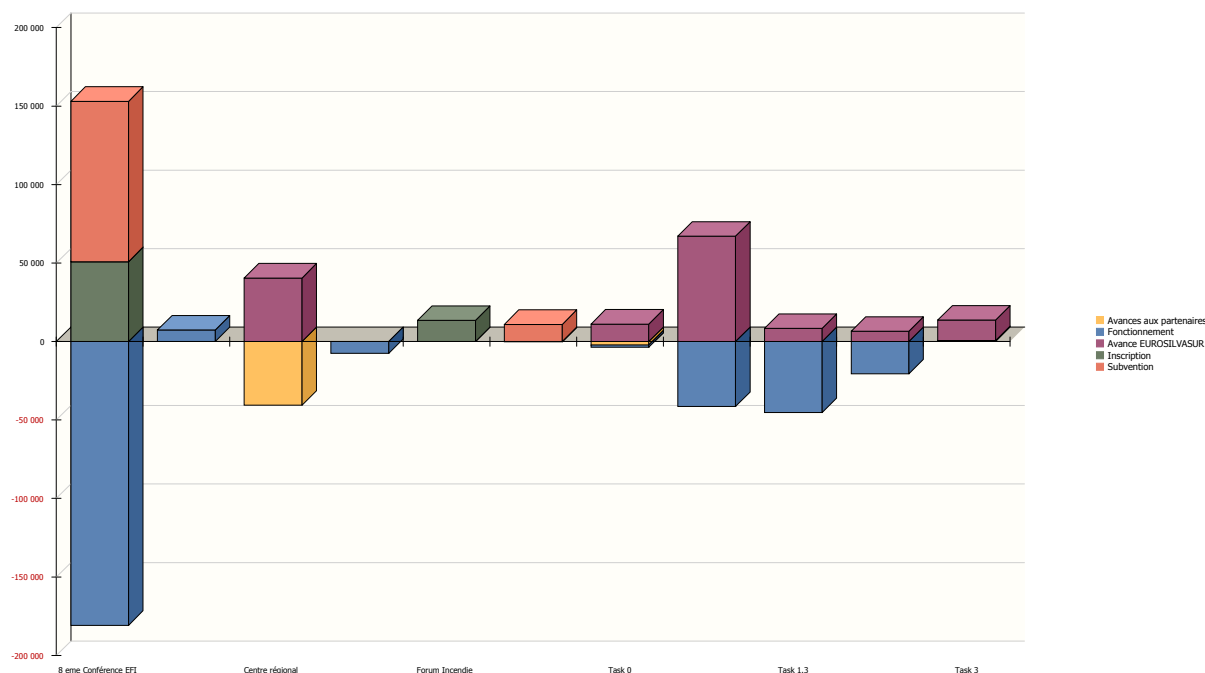
	Euros	
Revenus		
<hr/>		
Adhésions		
	2000	137,85 €
	2001	1 819,37 €
Total Adhésions		1 957,22 €
Avance EUROSILVASUR		71 703,92 €
Inscriptions		9 830,66 €
Subventions		17 242,18 €
Total Revenus		100 733,98 €
<hr/>		
Dépenses		
<hr/>		
Avances aux partenaires		6 526,63 €
	Fonctionnement	
Fond de caisse		
Frais bancaires		164,42 €
Frais de déplacement + séjour		11 264,95 €
Frais de personnel		51 824,97 €
Frais de publication-promotion		13 281,79 €
Frais de réunion		25 102,62 €
Frais généraux		1 755,37 €
Total Fonctionnement		103 394,12 €
	Investissement	
Aménagement de bureaux		182,17 €
Frais d'équipement		2 356,62 €
Total Investissement		2 538,79 €
Total Dépenses		112 459,54 €
Solde		-11 725,56 €

Répartition par projet

Taches	Avances aux partenaires	Fonctionnement	Investissement	Adhésion	Avance EUROSILVASUR	Inscription	Subvention	Virement s	Total
8 eme Conférence EFI		27 553,54 €				7 764,30 €	15 573,47 €		-4 215,77 €
Activité transversale		-1 122,02 €							1 122,02 €
Centre régional Echanges universitaires	6 176,00 €	1 148,53 €			6 176,00 €				0,00 €
Forum Incendie						2 066,36 €			2 066,36 €
Microsatellites Cs.		24,50 €					1 668,71 €		1 644,21 €
Siège		59 359,94 €	2 538,79 €	1 957,22 €	49 327,02 €				-10 614,49 €
Task 0	350,63 €	208,13 €			1 701,27 €				1 142,50 €
Task 1.1		6 300,27 €			10 229,44 €				3 929,17 €
Task 1.3		6 888,63 €			1 270,20 €				-5 618,43 €
Task 2		3 130,93 €			1 000,00 €				-2 130,93 €
Task 3		-98,33 €			2 000,00 €				2 098,33 €
Total général	6 526,63 €	103 394,12 €	2 538,79 €	1 957,22 €	71 703,92 €	9 830,66 €	17 242,18 €	0,00 €	-11 725,56 €

Visualisation de la répartition des recettes et des dépenses par projet (en excluant le siège)

Revenus et dépenses sans siège
Conversion dans la devise principale : Franc français



Commentaires sommaires en anglais:

Resources :

- 50% more than previous year, thanks to EFI 8th conference, and incorporation of **ALL** task fees into account since November EC audit
- main sources : EUROSILVASUR and EFI+DERF for conference, membership only 2%, What about the price of IEFC membership?

Expenses

- advances for our partner : mainly funds for regional centres
- functioning : The main part of the fees is functioning, for all task.
- Investment : actually we are just using our own fund for investment buying mainly computer material

Detailed Expenses

- Salaries and fees : Orazio + Inge Van Halder (task 1.3) + VIE right (task 0)
- Travel expenses : Orazio, Arbez, Board, but also 2000 euros for A. Colin (task 2)
- Publications, communication : EFI membership, Task 1.1 EFI proceedings n°41 (6300 euros!), wildfire workshop, advertising folder, www.iefc.net
- Meeting fees : restaurant and buses of all the conferences
- Phone, copy and mail only 2% thanks to e-mail!

Task activity on our account:

- Headquarters using about 64000 Euro is the main user of membership and eurosilvasur funds

- EFI 8th conference :cost 27553.54 € without discussion paper, cost for EUROSILVASUR : 4215.77 € the other part paid by EFI and registrations. Still missing 1500 euros from DERF-France
- “Activité transversale” : workshop on fire mapping (Vila real) danger 1122 euros
- Regional centres : Portugal and Galician second advance 6176 €
- Exchange between universities : DESS Bordeaux IV University, travel fees 1148 €
- Forum on wildfire : registration fees 2066.36 €
- Microsatellite consortium : AFOCEL contribution : 2066 €
- Task 0 : ENITA’s Students work : 1700 €
- Task 1.1 : EFI proceedings 6300 € reimbursement of old fees from conference
- Task 1.3 : Inge Van Halder salary 6888 € and fees
- Task 3 : Advance for ENITA’s students work 2000 €

Liste des participants

Photo de groupe



Liste

Nom	Coordonnées
Mme. Maria Helena Almeida	+ 351 21 365 3348 Fax:+ 351 21 364 5000 Intituto Superior de Agronomia Dep. de engenharia Florestal nica@isa.utl.pt Tapada de Ajuda 1349-017 Lisboa Portugal
M. Rosario Alves	Fax:22 609 01 56 Associação Florestal do Norte e Centro de Portugal forestis@mail.telepac.pt 823, Rua do campo alegre 4150-180 Porto Portugal
M. Michel Arbez	Fax:+33 (0)5 56 68 02 23 Institut Européen de la Forêt Cultivée Michel.arbez@netcourrier.com Domaine de l'Hermitage, BP 45 33611 Gazinet CEDEX Aquitaine France
M. Roberto Astorga	Fax:+34 986 87 33 64 Centro de Investigacion y Tecnologia del Grupo Empresarial ENCE SA Centro de Investigacion y Tecnologia rastorga@ceasa.es Carretera Campaño, Riveiro-Vao 36157 Pontevedra Galicia España
Mme. Manuela Branco Simões	+351 1 365 33 82 Fax:+351 21 36 45 000 Intituto Superior de Agronomia Dep. de engenharia Florestal mrbranco@isa.utl.pt Tapada de Ajuda 1349-017 Lisboa Portugal
M. Jean-Michel Carnus	Fax:

Annexe 3 - Procès Verbal Assemblée Générale de l'IEFC 2002

Institut National de Recherche Agronomique
 Pierroton Unité de Recherche
 carnus@pierroton.inra.fr Domaine de l'hermitage
 B.P. 45
 33611 Gazinet CEDEX Aquitaine France

Mlle. Isabel Carrasquinho Fax: +351 21 3973163
 Estacion Florestal Nacional
 geral@efn.net.vovis.pt Tapadas das necessidades
 Rua do Borja, 2
 1399-051 Lisboa Portugal

Mlle. Amélie Castro +33 (0)5 57 85 40 65 Fax: +33 (0)5 56 81 78 98
 Union des Sylviculteurs du Sud de l'Europe
 Eurosilvasur
 a.castro@cpfa.com Maison de la forêt
 6, parvis des chartrons
 33075 Bordeaux CEDEX Aquitaine France

M. Antoine Colin Fax:
 a.colin@iefc.net

Mme. Beatriz Cuenca Fax: +34 91 396 91 00
 Empresa de Transformacion Agraria
 Division I+D e Innovacion
 bcuenca@tragsa.es CI Maldonado, 58
 28006 Madrid España

Dr. Julio Diez Casero +34 (979) 72 90 48 Fax: +34 979 712099
 College of Agricultural Engineering (ETSIIAA).
 Laboratory of Forest Pests and Diseases.
 Department of Plant Production and Silviculture.
 jdcasero@pvs.uva.es Avenida de Madrid, 5
 34004 Palencia España

Pr. Ted Farrell +353 17 16 77 16 Fax: +353 1 716 11 02
 University College Dublin - Faculty of Agriculture
 Department of environmental resources - Forest Ecosystem Research Group
 ted.farrell@ucd.ie Agriculture Building, UCD, Belfield
 Dublin 4 Ireland

Mme. Josefa Fernandez Lopez Fax: 986 85 64 20
 Centro de investigacions florestais e Ambientais de Lourizán
 Centro de investigaciones florestales
 fina@inia.es Apartado 127
 36080 Pontevedra Galicia España

Mme. Maria Corinta Ferreira Fax:
 av Ernest Solvay 5, 1ºB
 2625-168 Povia Santa Iria Portugal

M. Antoine Kremer Fax:
 Institut National de Recherche Agronomique
 Pierroton Unité de Recherche
 kremer@pierroton.inra.fr Domaine de l'hermitage
 B.P. 45
 33611 Gazinet CEDEX Aquitaine France

M. Yves Lesgourgues 33 (0)5 56 01 54 77 Fax: +33 (0)5 56 51 28 08
 Centre Régional de la Propriété Forestière Aquitaine
 yves.lesgourgues@iefc.net 6, parvis des chartrons
 33075 Bordeaux CEDEX Aquitaine France

M. Manuel Madeira Fax: +351 21 3645000
 Instituto Superior de Agronomia
 Departament de Ciéncias do ambiente
 nunocortez@isa.utl.pt Tapada de Ajuda
 1349-017 Lisboa Portugal

M. Juan Majada Fax:
 Forestry department (SERIDA)
 jmajada@correo.uniovi.es

M. Inazio Martinez Arano Fax:
 Instituto Vasco de Investigacion y Desarrollo Agrario

M. Augustin Merino Fax: +34 (982) 24 11 83
 Universidad de Santiago de Compostella, Escuela Politécnica Superior
 Dep. Soil Science and Chemistry
 amerino@lugo.usc.es Escola Politécnica Superior
 Campus Universitario
 27002 Lugo Galicia España

Mr. Pedro Ochoa Fax: +351 21 36 45 000
 Instituto Superior de Agronomia
 Dep. de engenharia Florestal
 cef@isa.utl.pt Tapada de Ajuda

1349-017 Lisboa Portugal

M. Christophe Orazio Fax:+33 (0)5 56 68 02 23
Institut Européen de la Forêt Cultivée
aquitaine@iefc.net Domaine de l'Hermitage, BP 45
33611 Gazinet CEDEX Aquitaine France

M. Fernando Pascoa +351 239802946 Fax:(239) 802 979
Escola Superior Agraria de Coimbra
Gestion ESAC
fpascoa@mail.esac.pt Bencata
3040-316 Coimbra Portugal

M. Christian Pinaudeau Fax:
Union des Sylviculteurs du Sud de l'Europe
USSE
c.pinaudeau@alienor.fr Maison de la forêt
6, parvis des chartrons
33075 Bordeaux CEDEX Aquitaine France

M. Fernando Puertas Tricas +34 948 42 66 84 Fax:+34 (948) 42 37 97
Negociado de Experimentacion y Sanidad Forestal
fpuertat@cfnavarra.es Calle Tuleda, n°20, 1°
31002 Pamplona Navarra España

M. José Antonio Ribeiro Lopes Fax:(239) 802 979
Escola Superior Agraria de Coimbra
Gestion ESAC
jrlopes@mail.esac.pt Bencata
3040-316 Coimbra Portugal

Mr. Enrique Ritter Fax:+34 45 12 13 26
Instituto Vasco de Investigacion y Desarrollo Agrario
Produccion et proteccion vegetal
eritter@neiker.net Granja Modelo
Arkaute Apdo. 46
Apdo. 46
01080 Vitoria-Gasteiz Alava España

M. Daniel Saenz Garcia +34 945 12 12 40 Fax:945121290
Nekazal Ikerketa eta Teknologia
dsaenz@ikt.es Granja Modelo
01192 Arkaute Alava España

M. Jean-Charles Samalens +33 (0)6 83 34 46 67 Fax:+34 (945) 12 12 90
Nekazal Ikerketa eta Teknologia
jc.samalens@iefc.net Granja Modelo
01192 Arkaute Alava España

M. Etienne Saur Fax:05 57 35 07 09
Ecole Nationale des Ingénieurs des Travaux Agricoles
e-saur@enitab.fr 1, COURS Général de gaulle,
B.P. 201
33175 Gradignan CEDEX Aquitaine France

Mme. Margarida Tomé +351 213 63 81 61 Fax:+351 21 36 45 000
Intituto Superior de Agronomia
Dep. de engenharia Florestal
magatome@isa.utl.pt Tapada de Ajuda
1349-017 Lisboa Portugal

Mme. Carmen Traver +34 (948) 42 76 84 Fax:948 172 820
Gestion ambiental viveros y repoblaciones de Navarra
carmen.traver@gavn.com Avda San Jorge, 81 Eut Ida
31012 Pamplona Navarra España

M. Pierre Trichet 05 57 97 90 36 Fax:05 56 68 05 46
Institut National de Recherche Agronomique
Equipe Ecophysiologie et Nutrition
trichet@pierroton.inra.fr Domaine de l'hermitage
B.P. 45
33611 Gazinet CEDEX Aquitaine France

Mme. Inge Van Halder 33 (0)5 57122895 Fax:
Institut National de Recherche Agronomique
Laboratoire d'entomologie forestière
inge@pierroton.inra.fr Domaine de l'hermitage
B.P. 45
33611 Gazinet CEDEX Aquitaine France

Mlle. Carolina Varela Fax:+351 21 3973163
Estacion Florestal Nacional
mariacarolina-varela@clix.pt Tapadas das necessidades
Rua do Borja, 2
1399-051 Lisboa Portugal

M. Rafael Zas Fax:986 85 64 20
Centro de investigacions florestais e Ambientais de Lourizán
Centro de investigaciones forestales
rzas@sfp.cifl.cesga.es Apartado 127
36080 Pontevedra Galicia España