

# IEFC

## Institut Européen de la Forêt Cultivée

Institut Européen de la Forêt Cultivée – European Institute for Cultivated Forests (IEFC) is an independent non-governmental association established in 1998 under the umbrella of USSE (Southern European Forest Owners' Association) to promote the sustainable development of cultivated forests in Europe through improved cooperation in research, development and technology transfer. The current 25 member organisations of IEFC are research institutes, universities, forest owners organisations, and private companies.

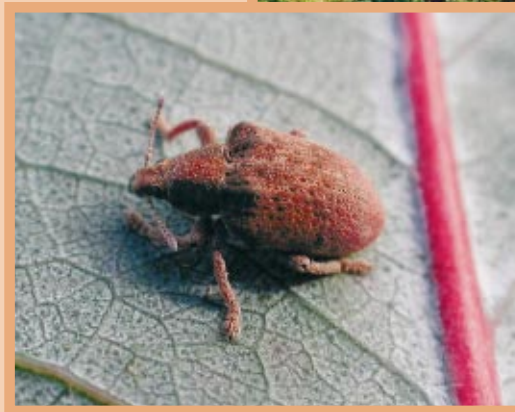
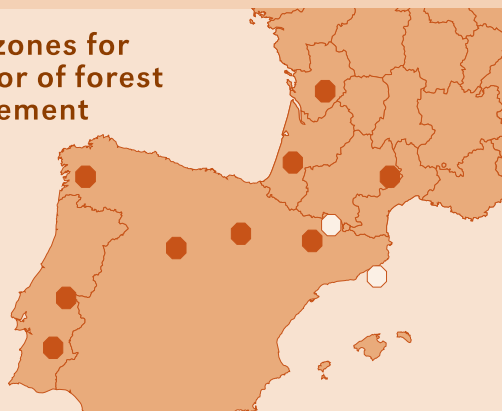
Since 2000 the IEFC has been a Regional Project Centre of EFI focused on the sustainable management of cultivated forests and organised in six thematic groups:

- Models
- Genetics
- Forest health
- Forest soils
- Socio-economics
- Sustainable Forest Management at the regional level/C&I.

### Mid-term projects (2002–2005) include

1. development of an integrated interdisciplinary research network,
2. establishment of an interregional network of monitoring zones for SFM,
3. improvement of coordination and links with tertiary education.

■ Network of pilot zones for criteria and indicator of forest sustainable management improvement



L'INSTITUT EUROPÉEN DE LA FORÊT CULTIVÉE

*European Institute for Cultivated Forests*

69 Route d'Arcachon – 33612 Gazinet Cedex – France

Tél: (33) 5.57.97.28 03 – Fax: (33) 5.56.68.02.33 – [www.iefc.net](http://www.iefc.net)

President: M Tome, ISA, Lisboa, Portugal

Director: C Orazio, IEFC, France



EFI Regional  
Project Centre

E U R O P E A N F O R E S T I N S T I T U T E



EFI  
Regional  
Project  
Centre

# IMACFORD

*« Improving and Advancing Co-ordination of  
Forest Research and Development in Europe »*

Accompanying Measure of the 5th Framework Programme  
EU project QLK5-CT-2002-30221

Task B1 coordinated by IEFC:  
« Development of Integrated Interdisciplinary Research  
Network for the Sustainable Management and Utilisation of  
Fast Growing Forest Resources »



European Institute for Cultivated Forests

# IMACFORD

## 1 - IMACFORD: General objectives and organisation

The objective of this 5th FP accompanying measure is to improve existing and develop new networking facilities in European forest research, and to adapt existing research structures to meet the new demands. The project leader is the European Forest Institute (EFI). The integrated research network will contribute to the emerging European Research Area.

To comply with the general objective, IMACFORD project organises its activities into 2 operative tasks.

- TASK A: Promote dialogue between EU and the forest research community and to develop a European network of thematic centres for forestry.
- TASK B: Prepare interdisciplinary research excellence networks (one for *Cultivated Forests*: task B1, one for *Mediterranean Forests*: task B2).

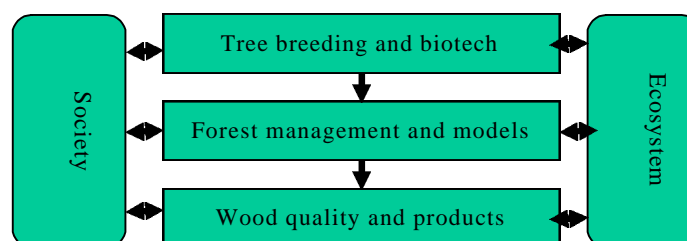
## 2 - IMACFORD Task B1

Task B1 of IMACFORD is coordinated by the European Institute for Cultivated Forests (IEFC).

Task B1 deals with the sustainable development of forestry-wood chains in the context of European cultivated forests and aims at the development of an integrated interdisciplinary research network for the sustainable management and utilisation of fast growing forest resources.

Specific research question that will be investigated :

How scientific progress and technical innovations in the context of plantation forests can contribute to the sustainable development of the forestry sector ?

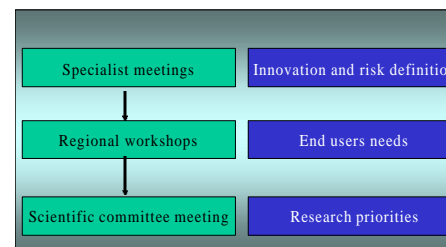


### **3 - Task B1: three phases for developing the research network**

Task B1 has 3 separate objectives:

- To improve the research coordination at an interregional level (task B11)

The first phase will investigate the ecological and socio-economic implications for research of technological innovations in forest management and silviculture, tree improvement, wood quality and products, and in a changing context.



- To provide a platform for dialogue with stakeholders and identification of research needs (task B12)

The second phase will facilitate dialogue with end-users and definition of research needs and priorities in sustainable forest management and forest-wood chain related topics.

- To elaborate a framework for integrated interdisciplinary research programmes (task B13)

The third and last phase will elaborate research programmes for sustainable management and

### **4 - Agenda and contact**

#### **TASK B1.1 Research network organisation and planning** (expert thematic meetings)

<b>DATE</b>	<b>LOCATION</b>	<b>TOPIC</b>
18-19 October 2002	Lousã, Portugal	Forest Management
15 November 2002	Vitoria, Spain	Tree Improvement
12 December 2002	Bordeaux, France	Wood Quality and Products

#### **TASK B1.2 Consultation process and identification of research needs** (regional workshops with end-users)

<b>DATE</b>	<b>LOCATION</b>	<b>TOPIC</b>
27-28 February 2003	Bordeaux, France	Regional issues for forest-wood chain
7-8 April 2003	Obidos, Portugal	Regional issues for forest-wood chain
15-16 May 2003	Santiago de Compostela, Spain	Regional issues for forest-wood chain

#### **TASK B1.3 Elaboration of a strategic framework for future research** (meeting with scientists)

2-5 July 2003, Dublin, Ireland — 3 thematic meetings + general meeting (Task B11 groups)

#### **Final reporting of Task B1 - June 2003**

IEFC Web site ([www.iefc.net](http://www.iefc.net)) proposes to download the latest documents concerning IMACFORD Task B1: synthesis of the meetings and workshops, updated agenda and meeting programmes, IMACFORD technical annex, etc.