

# **Technical Annex**

## **Quality of Life and Management of Living Resources**

# **Improving and Advancing Co-ordination of Forest Research and Development in Europe**

**QLAM-2001-00221**

**IMACFORD**

Key Action 5 'Sustainable agriculture, fisheries and forestry, and integrated development of rural areas including mountain areas'  
5.3. Sustainable and multi-purpose utilisation of forest resources; the integrated forestry-wood chain.

## **Table of contents**

1. Measureable Objectives and Expected Achievements .....	3
2. Project Workplan .....	4
3. Role of Participants.....	13
4. Project Management and Coordination .....	30
5. Exploitation and Dissemination Activities .....	31
6. Ethical Aspects and Safety Provisions .....	32

# 1. Measurable Objectives and Expected Achievements

## 1.1. Measurable Objectives

The objective of this Accompanying Measure is to improve existing and develop new networking facilities in European forest research, and to adapt existing research structures to meet the new demands.

The Accompanying Measure proposed here has therefore the following specific objectives:

- (a) to arrange a series of four co-ordination meetings (i) to exchange information and promote dialogue between the EU and the forest research community on the forestry-related research needs in the light of the forthcoming 6<sup>th</sup> Framework Programme and ERA, on one hand, and on the existing research capacities and networks in Europe in the field of forestry on the other (**Task A1**); and to (ii) explore and develop a European Network of Regional/Thematic Centres for Forestry, in a manner which will contribute to the European Research Area in an appropriate and meaningful way (**Task A2**).
- (b) to strengthen individual Regional/Thematic Centres for Forestry, with a special emphasis on regional research skills and multidisciplinary needs, in liaison with interregional sustainable development and links between research, industry and end users. The aim is to prepare interdisciplinary research excellence networks, facilitated by inputs from end-users (**Task B**). This project includes development plans of two such thematic networks as case studies, **subtask B1** focusing on the **sustainable development of forestry-wood chains in the context of fast-growing European forests** and **subtask B2** having as its topic **the sustainable development of sustainable management of Mediterranean forests**. The specific research questions which will be investigated in this project relate to *“how scientific progress and technical innovations can contribute to the sustainable development of the forestry sector”*.
- (c) as a result of (a) and (b), to produce pre-evaluated pan-European research programmes serving the needs of geographical and thematic networking between countries and disciplines, to meet the requirements of the European Research Area.

The aim of the project is to develop an integrated, innovative pan-European research network, which will contribute to the emerging European Research Area. The network will be open-ended, and not limited to the existing network within the consortium. Representatives of industries and end-users will be invited to participate in its work. The network will produce and efficiently disseminate relevant and actual knowledge on sustainable forestry in Europe including its ecological, economic and social aspects,

especially for policy-makers and decision-takers. The question how regional level funding can be integrated in the European context to meet the research needs will also be investigated within task A2: as the partners will investigate the potential sources of regional level funding for the final report of task A2 (deliverable of workshop A2.4).

## **1.2. Achievements**

The achievements expected as a result of the proposed Accompanying Measure are:

Task A1:

- to develop a better understanding in the European forest research community of the role of forestry in the 6<sup>th</sup> Framework Programme and European Research Area
- identification of networking topics and links to other disciplines

Task A2:

- to form an integrated, dynamic and innovative pan-European forest research network that can make a relevant contribution to the 6<sup>th</sup> FP and ERA
- integrated, interdisciplinary work programmes, which have been evaluated for their relevance and scientific quality
- identification of potential sources of regional funding for financing (parts of) the work programmes

Task B:

- to establish two interdisciplinary research excellence networks in the 6<sup>th</sup> FP linking research, industry and end users: one focusing on the sustainable management of fast-growing species and the other on the sustainable management of Mediterranean Forests.

## **2. Project Workplan**

### **2.1 Introduction**

The methods used for achieving the objectives of the project are (a) four structured workshops at pertinent levels (regional and European) for presentations and discussion on the topics of the project and (b) preparatory work (collection of information, discussions, interviews) in between the meetings by all participants, co-ordinated by EFI.

## 2.2 Project structure, planning and timetable

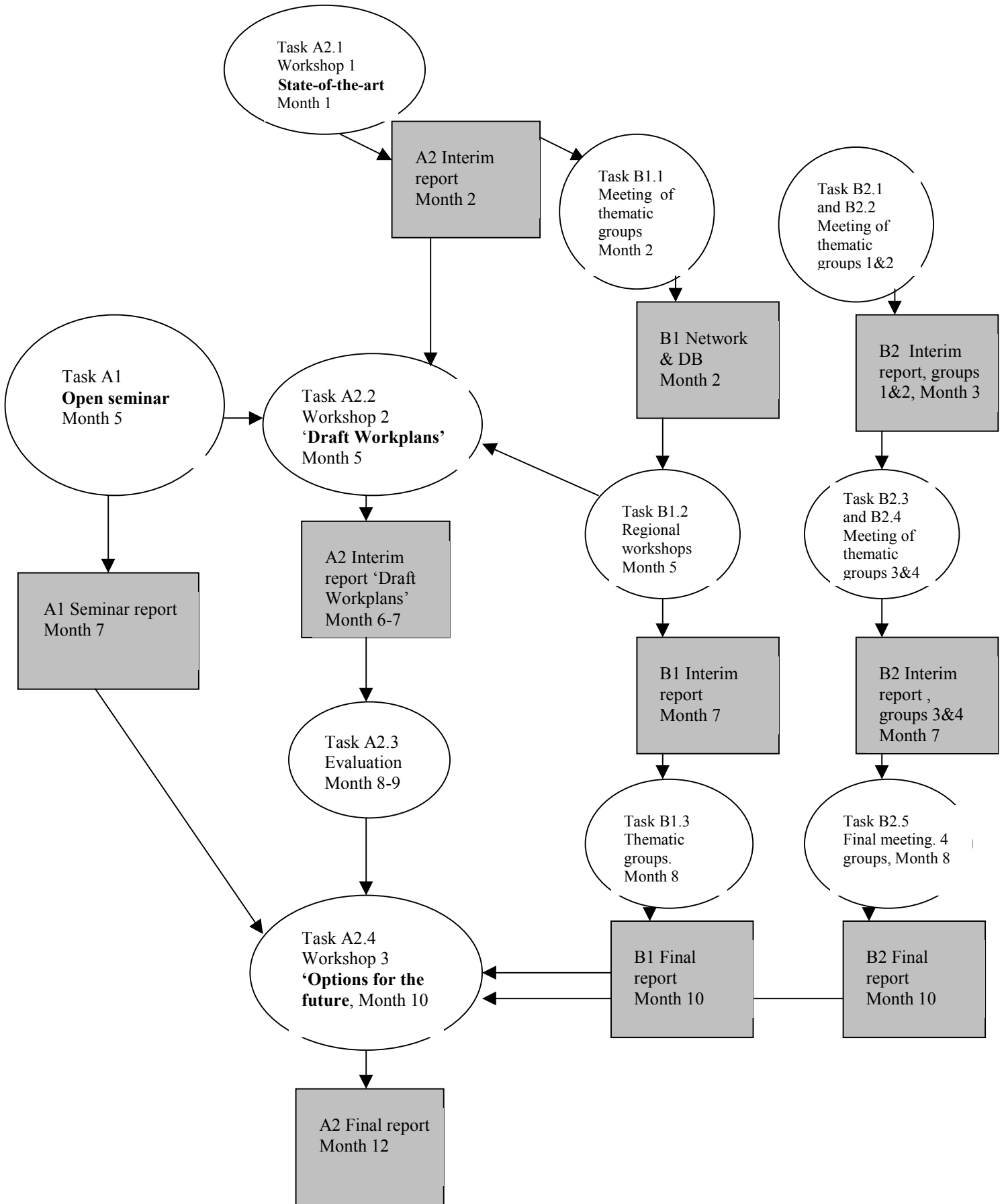
**Table 1: Work package list**

<b>Work package</b>	<b>Title</b>	<b>Duration</b>
<b>Work package A1</b>	<b>Open seminar ‘The role of forest research in the 6<sup>th</sup> Framework Programme and ERA’</b>	<b>Month 1-5</b>
<b>Work package A2</b>	<b>Strengthening the forest research network structure</b>	<b>Month 1-12</b>
Sub-workpackage A2.1	Workshop 1 ‘State-of the art and research needs’	Month 1
Sub-workpackage A2.2	Workshop 2 ‘Drafting the options for the future’	Months 1-8
Sub-workpackage A2.3	Evaluation by the Scientific Community	Months 8-9
Sub-workpackage A2.4	Workshop 3 ‘Options for the future’	Month 9-12
<b>Work package B1</b>	<b>Development of integrated interdisciplinary research network for the sustainable management and utilisation of fast growing Forest Resources</b>	<b>Months 1-10</b>
Sub-workpackage B1	Research network organisation and planning (thematic groups)	Months 1-2
Sub-workpackage B2	Consultation process and identification of research needs (regional workshops)	Months 3-6
Sub-workpackage B2	Elaboration of strategic framework for future research and dissemination	7-10
<b>Work package B2</b>	<b>Development of Integrated Interdisciplinary Research Network for the Sustainable Management of Mediterranean Forests</b>	<b>Months 1-10</b>
Sub-work package B2.1	Workshop: Trade-offs involved in sustainable Mediterranean forests relevant to end-users of different nature and in different regions	Month 1-3
Sub-work package B2.2	Workshop: how are those trade-offs perceived by end-users	Month 1-3
Sub-work package B2.3	Workshop: how are the trade-offs currently addressed by different disciplines and how are they communicated to end-users	Months 4-7
Sub-work package B2.4	Workshop: how can scientific approaches take into account the perceived trade-offs, co-operate and improve the usefulness of the results	Months 4-7
Sub-work package B2.5	Final workshop, final report and dissemination	Months 7-10

**Table 2. List of deliverables**

<b>Workpackage</b>	<b>Deliverable</b>	<b>Month of the project</b>
Task A1	Seminar report	Month 7
Task A2	Interim report (Workshop 1)	Month 2
	Interim report (Workshop 2) including: * Outlines of work programmes * A draft report on funding strategies for forest research networks * A draft report on links to industry and end users * A draft report on strategic links to neighbouring disciplines	Month 7
	Final report (Workshop 3), including: * A work programme consisting of research programmes/networks relevant to 6 <sup>th</sup> FP, including links to other disciplines, to industry and end-users. * A report on regional funding sources	Month 12
Task B1	Research network and database	Month 2
	Interim report: workshop discussion papers and research questions	Month 8
	Final report: Strategic framework for integrated interdisciplinary research projects	Month 10
Task B2	Interim report1: workshop discussion papers and research questions (topics 1 & 2)	Month 3
	Interim report: workshop discussion papers and research questions (topics 3 & 4)	Month 7
	Final report	Month 10

TASKS AND DELIVERABLES



## 2.3 Description of the workpackages

### Task A: Forestry and 6<sup>th</sup> Framework Programme – challenges and opportunities

Workpackage number:	<b>A1 Open seminar</b>
Start date:	Month 1
Completion date:	Month 7
Partners responsible:	Co-ordinator (EFI)
Objectives:	<ul style="list-style-type: none"> <li>to promote the dialogue and exchange of information between the EU and forest research community.</li> <li>To chart the forestry-related research needs in the light of the 6<sup>th</sup> Framework Programme and ERA</li> <li>To chart the existing research capacities and networks in Europe in the field of forestry</li> </ul> <p>At the seminar, the EU officials have an opportunity to present to the forest research community the new concepts that the 6<sup>th</sup> Framework Programme will bring, such as ‘Networks of Excellence’, Integrated Projects etc. Another aim is to discuss the role of forest research in the 6<sup>th</sup> Framework Programme and ERA, to identify potential topics for networking and to discuss the links to other disciplines (biology, climatology, information technology etc.). Participants of the forest research community will have an opportunity to present their views and visions on how forest-related research can contribute to the 6<sup>th</sup> Framework Programme.</p>
Deliverables	Publication on the seminar keynote papers
Milestones	<p><b>Month 5:</b> The seminar is organised</p> <p><b>Month 7:</b> The seminar publication is ready.</p>

Workpackage number:	<b>A2 Strengthening the forest research network structure</b>
Start date:	Month 1
Completion date:	Month 12
Partners responsible	Co-ordinator (EFI), all partners participate
Objectives	<ul style="list-style-type: none"> <li>To arrange a series of three workshops between the Co-ordinator, European Forest Institute, Regional/Thematic Centres and other relevant bodies will be arranged in order to develop a European Network of Regional/Thematic Centres for Forestry, in a manner that will contribute to the European Research Area in an appropriate and meaningful way. Representatives of industries and end-users will be invited to the workshops.</li> <li>to develop integrated European-scale work programmes based on the research needs in the field of forestry.</li> </ul>
Deliverables	Two interim reports, evaluation report, final report (see sub-workpackages)
Milestones	<p>Workshop 1 Month 1</p> <p>Workshop 2 Month 5</p> <p>Evaluation Month 9</p> <p>Workshop 3 Month 10</p>



Workpackage A2 is divided into four sub-workpackages.

Sub-workpackage number:	<b>A2.1</b> <b>Workshop 1 ‘State-of the art and research needs’</b>
Start date:	Month 1
Completion date:	Month 3
Partners responsible	Co-ordinator Participants in this task are representatives of six Regional/Thematic Centres (Russia may participate at its own expense), representatives of industry and end-users, other interested observers outside the present network (30-40 persons)
Objectives	<ul style="list-style-type: none"> <li>- to chart in more detail forest research capacities and needs in various regions in Europe, especially from the point of view of the emerging 6<sup>th</sup> Framework Programme</li> <li>- to chart the available expertise within the Regional/Thematic Centres as well as EFI headquarters; and to confirm the objectives of subtasks B1 and B2.</li> <li>- to initiate research and work programmes to meet the emerging research needs, reflecting the experience of each partner.</li> </ul>
Deliverables	An interim report describing <ol style="list-style-type: none"> <li>1) the existing research capacities in Europe in selected fields and</li> <li>2) their funding structure,</li> <li>3) the EU research needs related to forestry,</li> <li>4) the expertise available within EFI and its Regional/Thematic Centres</li> <li>5) relevant links to other disciplines.</li> </ol>

Sub-workpackage number:	<b>A2.2</b> <b>Workshop 2 ‘Drafting the options for the future’</b>
Start date:	Month 3
Completion date:	Month 7
Partners responsible	Co-ordinator Participants in this task are representatives of six Regional/Thematic Centres (Russia may participate at its own expense), representatives of industry and end-users, other interested observers outside the present network (30-40 persons)
Objectives	<ul style="list-style-type: none"> <li>- to continue the design of work programmes to meet the research needs</li> <li>- to discuss the availability of regional funding sources to the research</li> <li>- to discuss links to industry and end-users</li> </ul>
Deliverables	An interim report outlining the work programmes, including a draft report on funding strategies for forest research networks, a draft report on links to industry and end users, and a draft report on strategic alliances to neighbouring disciplines.

Sub-workpackage number:	<b>A2.3</b> <b>Evaluation by the Scientific Community</b>
Start date:	Month 8
Completion date:	Month 9
Partners responsible	Co-ordinator Independent experts in the relevant fields .
Objectives	To evaluate the relevance and scientific quality of the proposed initiatives
Deliverables	Evaluation results.

Sub-workpackage number:	<b>A2.4</b> <b>Workshop 3 ‘Options for the future’</b>
Start date:	Month 9
Completion date:	Month 12
Partners responsible	Co-ordinator Participants in this task are representatives of six Regional/Thematic Centres (Russia may participate at its own expense), EU officials, representatives of industry and end-users, other experts (30-40 persons),
Objectives	- to present the work plans developed in the framework of the project relevant to each partner’s expertise.
Deliverables	Final report, consisting of forest-related research work plans relevant to 6 <sup>th</sup> FP, including links to other disciplines, to industry and end-users, and a report on regional funding sources.

### Task B: Strengthening of the individual networks

Workpackage number:	<b>B1</b> <b>Development of integrated interdisciplinary research network for the sustainable management and utilisation of fast growing Forest Resources</b>
Start date:	Month 1
Completion date:	Month 10
Partners responsible	Partner 2: IEFCE Institut Européen de la Forêt Cultivée
Objectives	The task has three separate objectives: 1. to improve the research coordination at an interregional level 2. to provide a platform for dialogue with stakeholders and identification of research needs 3. to elaborate a framework for integrated interdisciplinary research programmes
Deliverables	Interim report, database (Month 2) Interim report: workshop discussion papers and research questions (Month 7) Final report: Strategic framework for integrated interdisciplinary research projects (Month 10)
Milestones	Meeting of thematic groups, Month 2

	Regional workshops, Month 5 Meeting of thematic groups, Month 8
--	--

Workpackage B1 is divided into three sub-workpackages.

Sub-workpackage number:	<b>B1.1</b> <b>Research network organisation and planning</b>
Start date:	Month 1
Completion date:	Month 2
Partners responsible	Partner 2: IEFC Institut Européen de la Forêt Cultivée
Objectives	to arrange an initial meeting of the three thematic groups and an overall meeting with involvement of the scientists and some stakeholders, to plan the research network organisation.
Deliverables	Interim report

Sub-workpackage number:	<b>B1.2</b> <b>Consultation process and identification of research needs</b>
Start date:	Month 3
Completion date:	Month 8
Partners responsible	Partner 2: IEFC Institut Européen de la Forêt Cultivée
Objectives	to arrange four regional workshops with scientists, stakeholders and end-users, and an overall synthesis meeting, in order to identify research needs. The achievement of task B1.2 will correspond with Workshop 2 (task A2.2)
Deliverables	Interim report

Sub-workpackage number:	<b>B1.3</b> Elaboration of strategic framework for future research
Start date:	Month 9
Completion date:	Month 10
Partners responsible	Partner 2: IEFC Institut Européen de la Forêt Cultivée
Objectives	To arrange a final meeting of the three thematic groups to elaborate a strategic framework for future research and to organise dissemination . The achievement of task B1.3 will correspond with Workshop 3 (task A2.4)
Deliverables	Final report: strategic framework for integrated interdisciplinary research projects

Workpackage number:	<b>B2</b> <b>Development of Integrated Interdisciplinary Research Network for the Sustainable Management of Mediterranean Forests</b>
Start date:	Month 1
Completion date:	Month 10
Partners responsible	Partner 3: CTFC Forest Technology Centre of Catalonia
Objectives	The task has three separate objectives: 1. to improve the research coordination at a disciplinary, regional, and research-end user level

	2. to provide a platform for dialogue with a wide variety of end-users and identify research needs 3. to elaborate a framework for integrated interdisciplinary and more end-user oriented research programmes
Deliverables	Interim reports (Months 3 and 7) Final report (Month 10)
Milestones	Meeting of thematic groups 1 and 2 (Month 2) Meeting of thematic groups 3 and 4 (Month 5) Final meeting, (Month 8) Meeting of thematic groups, Month 8

Workpackage B2 is divided into five sub-workpackages.

Sub-workpackage number:	<b>B2.1</b> <b>Workshop 1: Trade-offs involved in sustainable Mediterranean forests relevant to end-users of different nature and in different regions</b>
Start date:	Month 1
Completion date:	Month 3
Partners responsible	Partner 3: CTFC Forest Technology Centre of Catalonia
Objectives	To discuss what are the trade-offs involved in sustainable Mediterranean forests relevant to end-users of different nature and in different regions
Deliverables	Interim report (Month 3)

Sub-workpackage number:	<b>B2.2</b> <b>Workshop 2: How are trade-offs perceived by users?</b>
Start date:	Month 1
Completion date:	Month 3
Partners responsible	Partner 3: CTFC Forest Technology Centre of Catalonia
Objectives	To discuss how the trade-offs are currently perceived by users
Deliverables	Interim report, (Month 3)

Sub-workpackage number:	<b>B2.3</b> <b>Workshop 3: How are the trade-offs currently addressed by different disciplines and how are they communicated to end-users</b>
Start date:	Month 3
Completion date:	Month 7
Partners responsible	Partner 3: CTFC Forest Technology Centre of Catalonia
Objectives	To discuss how are the trade-offs currently addressed by different disciplines and how are they communicated to end-users
Deliverables	Interim report (Month 7)

Sub-workpackage number:	<b>B2.4</b> <b>Workshop 4: How can scientific approaches take into account the perceived trade-offs, co-operate and improve the usefulness of the results</b>
Start date:	Month 3
Completion date:	Month 7

Partners responsible	Partner 3: CTFC Forest Technology Centre of Catalonia
Objectives	To discuss how scientific approaches can take into account the perceived trade-offs, co-operate and improve the usefulness of the results
Deliverables	Interim report (Month 7)

Sub-workpackage number:	<b>B2.5</b> <b>Final workshop, final report and dissemination</b>
Start date:	Month 8
Completion date:	Month 10
Partners responsible	Partner 3: CTFC Forest Technology Centre of Catalonia
Objectives	To wrap up the previous work and plan dissemination, involving researchers, end-users, and other interested observers.
Deliverables	Final report (Month 10)

### 3. Role of Participants

#### Partner 1

##### European Forest Institute, EFI

Torikatu 34, 80100 Joensuu, Finland

Tel. +358 13 252 020, Fax +358 13 124 393, Email: [efisec@efi.fi](mailto:efisec@efi.fi)

#### Project team:

Dr. Risto Päivinen, Director

Dr. Timo Karjalainen, Programme Manager, Forest Ecology and Management

Dr. Anssi Niskanen, Programme Manager, Forest Products Markets and Socio-Economics

Mr. Ilpo Tikkanen, Programme Manager, Policy Analysis

Mr. Andreas Schuck, Programme Manager, Forest Resources and Information

Ms Brita Pajari, Event Manager

Ms. Leena Roihuvuo, Administrative Officer (Research)

#### Contractual links to other participants:

EFI co-ordinates the project and is the sole contractor with the EU. EFI concludes subcontracts with the other participants of the project as detailed below.

#### Objectives

EFI is the co-ordinator of the project, responsible for the overall project management. EFI has also the overall responsibility of tasks A1 and A2.

#### Workplan

EFI's main contribution is to workpackages A1 and A2.

### Workpackage A1

EFI's role: Overall co-ordination. In particular, EFI will

- Design the programme and its contents in co-operation with the EU
- Invite keynote speakers (many of which will be EU officials)
- Market the seminar to the forest research community
- Take care of the practical arrangements (registrations, fees, venues, background documentation, other practicalities)
- Edit the seminar report

### Workpackage A2

EFI's role: overall co-ordination.

EFI will arrange a series of three workshops for the representatives of its Regional/Thematic Centres and representatives of industry and end-users, with the overall aim to develop a European Network of Regional/Thematic Centres for Forestry to serve the objectives of the European Research Area. Between the 2<sup>nd</sup> and 3<sup>rd</sup> meeting, EFI will co-ordinate a scientific evaluation of draft work programmes by the Scientific Advisory Board of EFI.

In particular, EFI will

- Design the workshop programmes and their contents in co-operation with the other participants (mainly Regional/Thematic Centres). Each workshop will contain both plenary sessions and group work according to various topics.
- Invite the participants and prepare the background documentation. EU officials, representatives of industry, end-users and other experts will be invited to each workshop.
- Compile and edit the workshop reports
- Within the subworkpackage A2.3 (Evaluation by the Scientific Community), EFI will co-ordinate the evaluation procedure and the information flow between the Scientific Advisory Board, EFI's research programmes and the Regional/Thematic Centres.

Within each individual Regional/Thematic Centre, the co-ordinator of the Centre is responsible for the networking and information flow among the participants of that individual network.

### **Person months:**

<b>Workpackage</b>	<b>Person-months</b>
A1	4
A2	10,5

## **Deliverables**

### **Task A1 Open seminar:**

Deliverable A1: Seminar report, in which

- the role of forest research in the 6<sup>th</sup> Framework Programme and ERA is discussed
- forestry-related research needs are charted in the light of the forthcoming 6<sup>th</sup> Framework Programme and ERA
- potential topics for networking and to links to other disciplines (biology, climatology, information technology etc.) are discussed
- existing research capacities and networks in Europe in the field of forestry are charted.

### **Task A2: Strengthening the Forest Research Network Structure**

Deliverable A2.1: Interim report ‘State-of the art and research needs’, charting tentatively

- 1) the existing research capacities in Europe in selected fields and
- 2) their funding structure,
- 3) the EU research needs related to forestry
- 4) the expertise available within EFI and its Regional/Thematic Centres,
- 5) relevant links to other disciplines.

Deliverable A2.2: Interim report ‘Drafting the options for the future’. An interim report outlining the work programme drafts, including a draft report on funding strategies for forest research networks, a draft report on links to industry and end users, and a draft report on strategic alliances to neighbouring disciplines.

Deliverable A2.3: Results of the evaluation of the work programme drafts.

Deliverable A2.4: Final report of task A2, including presentations of forest-related research work plans/programmes relevant to 6<sup>th</sup> FP, including links to other disciplines, to industry and end-users, and a report on potential regional funding sources.

### **Timetable:**

<b>Deliverable</b>	<b>Timetable</b>
A1	Month 7
A2.1	Month 2
A2.2	Month 7
A2.3	Month 9
A2.4	Month 12

## **Partner 2**

### **IEFC Institut Européen de la Forêt Cultivée**

BP 45, Domaine de l'hermitage  
33611 Gazinet Cedex, France  
Tel. +33 5 57 12 28 03, Fax +33 5 57 12 0223  
Email: [aquitaine@iefc.net](mailto:aquitaine@iefc.net)

### **Project team:**

Christophe Orazio, IEFC Director  
Jean-Michel Carnus, Director, INRA Bordeaux Forestry Research, France  
Ass. Prof. Margarida Tome, ISA Lisboa, programme manager, forest modelling and management, Portugal  
Dr. Antoine Kremer, INRA, programme manager, forest biodiversity and tree genetics, France  
Prof. Pierre Morlier, University of Bordeaux I, Wood Science, France  
Prof. Americo Mendes, University of Porto, Forest Economy, Portugal

IEFC participates in Tasks A1, A2 and is the co-ordinator of the task B1.

### **Workplan**

IEFC's main contribution is to workpackages B1 and A2. IEFC will also participate in the open seminar (Workpackage A1).

#### Workpackage B1

The role of IEFC: Overall co-ordination. In particular, IEFC will

- organise initial meetings of the three thematic groups on innovation factors (biotechnologies and genetics, forest management, new wood based products)
- design the four regional workshop programmes and their contents in co-operation with the other participants of the thematic groups and IEFC network organisations
- invite the workshop participants (experts, industry representatives, end-users) and prepare the background documentation.
- compile and edit the workshop reports
- organise final meetings of the three thematic groups
- compile and edit the final report of task B1.

#### Workpackage A2

Within Workpackage A2, IEFC will undertake the following tasks:

In general, IEFC will



- participate in the three workshops of task A2
- participate in the design, information compilation and other preparatory work for the three workshops in co-operation with the co-ordinator
- co-ordinate the networking and information flow among the participants of its own network.
- contribute to the workshop reports
- contribute to the dissemination of the results

More specifically, IEFC will undertake the following tasks:

**In A2.1 Workshop 1 ‘State-of the art and research needs’:**

- to investigate existing capacities and research needs in Europe concerning the sustainable management and utilisation of fast growing forest resources, relevant from the point of view of the 6<sup>th</sup> Framework Programme
  - to chart the available expertise within the Regional/Thematic Centres as well as EFI headquarters or elsewhere
  - to start planning research and work programmes to meet the emerging research needs
- To prepare a part of the report of Workshop A2.1, by describing
- 1) the existing research capacities in Europe in the sustainable management and utilisation of fast growing forest resources
  - 2) their funding structure
  - 3) the EU research needs related to this topic,
  - 4) the expertise available within EFI and its Regional/Thematic Centres
  - 5) relevant links to other disciplines.

**In A2.2 Workshop 2 ‘Drafting the options for the future’:**

- to continue the design of work programmes to meet the research needs
- to discuss the availability of regional funding sources to the research
- to discuss links to industry and end-users
- to outline relevant work programmes that can be submitted to external scientific evaluation, including a draft report on funding strategies for forest research networks, a draft report on links to industry and end users, and a draft report on strategic alliances to neighbouring disciplines.

**In A2.4 Workshop 3 ‘Options for the future’**

- to present the work plans developed in the framework of the project
- to prepare a part of the final report, consisting of work plans relevant to 6<sup>th</sup> FP, including links to other disciplines, to industry and end-users, and a report on regional funding sources.

**Person months:**

<b>Workpackage</b>	<b>Person-months</b>
A2	2
B1	8

**Deliverables**

- contribution to deliverable A2.1:
  - 1) report the existing research capacities in Europe in the research of fast growing forest resources
  - 2) their funding structure
  - 3) the EU research needs related to this topic,
  - 4) the expertise available within EFI and its Regional/Thematic Centres;
  - 5) relevant links to other disciplines.

- contribution to deliverable A2.2: draft work programmes that can be submitted to external scientific evaluation, draft report on funding strategies for forest research networks, a draft report on links to industry and end users, and a draft report on strategic alliances to neighbouring disciplines
- contribution to deliverable A2.4: as part of the final report, to prepare work plans relevant to 6<sup>th</sup> FP, including links to other disciplines, to industry and end-users, and a report on regional funding sources.

Deliverable B1.1: interim report “**research network organisation**” including:

1. thematic groups composition and planned activities
2. forestry interregional issues and topics for research networking
3. regional workshop programmes
4. database on existing research capacities

Deliverable B1.2: interim report “**regional workshops discussions**“ in which

1. industry and end-users demands are presented
2. roles and impacts of technical innovations in forestry are discussed
3. research needs are defined in relation with the sustainable development of plantation forests

Deliverable B1.3: final report “**framework for future research**” including proposals from the three thematic groups for an interdisciplinary excellence research network within the future ERA and for integrated forest research programmes on the sustainable management and utilisation of fast growing forest resources.

**Timetable:**

<b>Deliverable</b>	<b>Timetable</b>
B1.1	Month 2
B1.2	Month 8
B1.3	Month 10

**Partner 3**

**CTFC Forest Technology Centre of Catalonia**

Pujada del Seminari s/n  
25280 Solsona, Catalonia, Spain  
Tel. +34 973 48 1752, Fax +34 973 48 1392  
Email: pere.riera@uab.es

**Project team:**

Dr. Pere Riera, Scientific Coordinator  
Mr. Tonatiuh Nájera, Assisting Coordinator for Workshops 1 and 2  
Mr. Antoni Trasobares, Assisting Coordinator for Workshops 3 and 4  
Mr. Marc Palahí, Assisting Coordinator for the Final Workshop  
Dr. José Antonio Bonet, Overall Manager

Ms. Rosa Ricart, Event Manager

CTFC participates in Tasks A1, A2 and is the co-ordinator of the task B2.

## **Workplan**

CTFC's main contribution is to workpackages B2 and A2. CTFC will also participate in the open seminar (Workpackage A1).

### Workpackage B2

The role of CTFC: Overall co-ordination. In particular, CTFC will

- Design the workshop programmes and their contents in co-operation with the other participants
- Invite the participants and prepare the background documentation.
- Compile and edit the workshop reports
- Compile and edit the final workshop report of task B2.

### Workpackage A2

Within Workpackage A2, CTFC will undertake the following tasks:

In general, CTFC will:

- participate in the three workshops in co-operation with the co-ordinator
- participate in the design, information compilation and other preparatory work for the three workshops
- co-ordinate the networking and information flow among the participants of its own network
- contribute to the workshop reports
- contribute to the dissemination of the results

More specifically, CTFC will undertake the following tasks:

#### **In A2.1 Workshop 1 'State-of the art and research needs':**

- to investigate existing capacities and research needs in Europe concerning the sustainable management of Mediterranean Forests, relevant from the point of view of the 6<sup>th</sup> Framework Programme
- to chart the available expertise within the Regional/Thematic Centres as well as EFI headquarters or elsewhere
- to start planning research and work programmes to meet the emerging research needs

To prepare a part of the report of Workshop A2.1, by describing

- 1) the existing research capacities in Europe in the sustainable management and utilisation of Mediterranean forests
- 2) their funding structure
- 3) the EU research needs related to this topic,
- 4) the expertise available within EFI and its Regional/Thematic Centres
- 5) relevant links to other disciplines.

#### **In A2.2 Workshop 2 'Drafting the options for the future':**

- to continue the design of work programmes to meet the research needs
- to discuss the availability of regional funding sources to the research

- to discuss links to industry and end-users
- to outline relevant work programmes that can be submitted to external scientific evaluation, including a draft report on funding strategies for forest research networks, a draft report on links to industry and end users, and a draft report on strategic alliances to neighbouring disciplines.

#### **In A2.4 Workshop 3 ‘Options for the future’**

- to present the work plans developed in the framework of the project
- to prepare a part of the final report, consisting of work plans relevant to 6<sup>th</sup> FP, including links to other disciplines, to industry and end-users, and a report on regional funding sources.

#### **Person months:**

<b>Workpackage</b>	<b>Person-months</b>
A2	2
B2	8

#### **Deliverables**

- contribution to deliverable A2.1:  
1) report the existing research capacities in Europe in the research of Mediterranean forest resources 2) their funding structure 3) the EU research needs related to this topic, 4) the expertise available within EFI and its Regional/Thematic Centres; 5) relevant links to other disciplines.
- contribution to deliverable A2.2: draft work programmes that can be submitted to external scientific evaluation, draft report on funding strategies for forest research networks, a draft report on links to industry and end users, and a draft report on strategic alliances to neighbouring disciplines
- contribution to deliverable A2.4: as part of the final report, to prepare work plans relevant to 6<sup>th</sup> FP, including links to other disciplines, to industry and end-users, and a report on regional funding sources.

Deliverables B2.1 and B2.2: Interim report of the opening workshop and the first theme-specific workshop. It will address topics such as:

- 1) The identification of the most relevant trade-offs for sustainable Mediterranean forests as indentified by stake-holders, especially by researchers and end-users
- 2) A list of specific features of Mediterranean forest trade-offs
- 3) A proposal for research and communication among Mediterranean countries, research institutions and end-users
- 4) A proposal for establishing a more formal relationship between Mediterranean research and the research from other European regions
- 5) A list of the main differences between research and research needs from the end-users perspective
- 6) The agenda for future workshops

Deliverables B2.3 and B2.4: Interim report of the workshops on interdisciplinary cooperation and improvement of research focus for end-users. The report will reflect the

main conclusions of both workshops. Emphasis will be placed on how end-users can take advantage of disciplinary and inter-disciplinary forest research. Also, the likelihood of improved cooperation among Mediterranean forest researchers from different disciplines to work together on a FP6 research proposal relevant to end-users.

Deliverable B2.5: Final report. The final report will reflect the wrap-up work from the final workshop and the main conclusions of the overall process. It will focus as well on a research agenda and the dissemination of the results of the different workshops and research in general.

**Timetable:**

<b>Deliverable</b>	<b>Timetable</b>
B2.1 and B2.2	Month 3
B2.3 and B2.4	Month 7
B2.5	Month 10

**Partner 4**

**Danish Forest and Landscape Research Institute (DFLRI)**

Hoersholm Kongevej 11  
2970 Hoersholm, Denmark  
Tel. ++45 45 76 32 00, Fax 45 45 76 32 33  
Email: cck@fsl.dk

**Project team:**

Dr Niels Elers Koch, Director DFLRI & EUFORIC  
Dr Kjell Nilsson, Vice-Director DFLRI & EUFORIC  
Dr Cecil Konijnendijk, Senior Researcher and Coordinator of EUFORIC  
Dr Thomas Randrup, Senior

Partner 4 participates in Tasks A1 and A2.

**Workplan**

The main contribution of partner 4 is to workpackage A2. It will also participate in the open seminar (Workpackage A1).

Workpackage A2

Within Workpackage A2, DLFRI will undertake the following tasks:

In general, DLFRI will:

- participate in the three workshops in co-operation with the co-ordinator
- participate in the design, information compilation and other preparatory work for the three workshops
- co-ordinate the networking and information flow among the participants of its own network.
- contribute to the workshop reports
- contribute to the dissemination of the results

More specifically, DLFRI will undertake the following tasks:

**In A2.1 Workshop 1 ‘State-of the art and research needs’:**

- to investigate existing capacities and research needs in Europe concerning the research of urban forests, relevant from the point of view of the 6<sup>th</sup> Framework Programme
  - to chart the available expertise within the Regional/Thematic Centres as well as EFI headquarters or elsewhere
  - to start planning research and work programmes to meet the emerging research needs
- To prepare a part of the report of Workshop A2.1, by describing
- 1) the existing research capacities in Europe in the research of urban forests
  - 2) their funding structure
  - 3) the EU research needs related to this topic,
  - 4) the expertise available within EFI and its Regional/Thematic Centres
  - 5) relevant links to other disciplines.

**In A2.2 Workshop 2 ‘Drafting the options for the future’:**

- to continue the design of work programmes to meet the research needs
- to discuss the availability of regional funding sources to the research
- to discuss links to industry and end-users
- to outline relevant work programmes that can be submitted to external scientific evaluation, including a draft report on funding strategies for forest research networks, a draft report on links to industry and end users, and a draft report on strategic alliances to neighbouring disciplines.

**In A2.4 Workshop 3 ‘Options for the future’**

- to present the work plans developed in the framework of the project
- to prepare a part of the final report, consisting of work plans relevant to 6<sup>th</sup> FP, including links to other disciplines, to industry and end-users, and a report on regional funding sources.

**Person months:**

Workpackage	Person-months
A2	2

**Deliverables**

- contribution to deliverable A2.1:
  - 1) report the existing research capacities in Europe in the research urban forests
  - 2) their funding structure
  - 3) the EU research needs related to this topic,
  - 4) the expertise available within EFI and its Regional/Thematic Centres;
  - 5) relevant links to other disciplines.

- contribution to deliverable A2.2: draft work programmes that can be submitted to external scientific evaluation, draft report on funding strategies for forest research networks, a draft report on links to industry and end users, and a draft report on strategic alliances to neighbouring disciplines
- contribution to deliverable A2.4: as part of the final report, to prepare work plans relevant to 6<sup>th</sup> FP, including links to other disciplines, to industry and end-users, and a report on regional funding sources

**Timetable:**

<b>Deliverable</b>	<b>Timetable</b>
A2.1	Beginning of Month 2
A2.2	Month 6
A2.4	Month 11

**Partner 5**

**Agricultural University of Vienna, Institute of Forest Sector Policy and Economics**

Gregor-Mendel-Str. 33

1180 Vienna, Austria

Tel. +43 1 476 544 401, Fax +43 1 476 544 407

Email: e.rametsteiner@lu-vienna.at

**Project team:**

Dr. Ewald Rametsteiner, executive Director of INNOFORCE, expert on certification, international forest policy

Mag. Klaus Kubeczko, Researcher; expert on environmental and evolutionary economics

Partner 5 participates in Tasks A1 and A2.

**Workplan**

The main contribution of partner 5 is to workpackage A2. It will also participate in the open seminar (Workpackage A1).

Workpackage A2

Within Workpackage A2, Institute of Forest Sector Policy and Economics will undertake the following tasks:

In general, Partner 5 will:

- participate in the three workshops in co-operation with the co-ordinator
- participate in the design, information compilation and other preparatory work for the three workshops
- co-ordinate the networking and information flow among the participants of its own network.
- contribute to the workshop reports

- contribute to the dissemination of the results

More specifically, Partner 5 will undertake the following tasks:

**In A2.1 Workshop 1 ‘State-of the art and research needs’:**

- to investigate existing capacities and research needs in Europe concerning innovation and entrepreneurship in the forest sector, relevant from the point of view of the 6<sup>th</sup> Framework Programme
- to chart the available expertise within the Regional/Thematic Centres as well as EFI headquarters or elsewhere
- to start planning research and work programmes to meet the emerging research needs

To prepare a part of the report of Workshop A2.1, by describing

- 1) the existing research capacities in Europe in the research concerning innovation and entrepreneurship in the forest sector
- 2) their funding structure
- 3) the EU research needs related to this topic,
- 4) the expertise available within EFI and its Regional/Thematic Centres
- 5) relevant links to other disciplines.

**In A2.2 Workshop 2 ‘Drafting the options for the future’:**

- to continue the design of work programmes to meet the research needs
- to discuss the availability of regional funding sources to the research
- to discuss links to industry and end-users
- to outline relevant work programmes that can be submitted to external scientific evaluation, including a draft report on funding strategies for forest research networks, a draft report on links to industry and end users, and a draft report on strategic alliances to neighbouring disciplines.

**In A2.4 Workshop 3 ‘Options for the future’**

- to present the work plans developed in the framework of the project
- to prepare a part of the final report, consisting of work plans relevant to 6<sup>th</sup> FP, including links to other disciplines, to industry and end-users, and a report on regional funding sources.

**Person months:**

Workpackage	Person-months
A2	2

**Deliverables**

- contribution to deliverable A2.1:
  - 1) report the existing research capacities in Europe in the research of urban forests
  - 2) their funding structure
  - 3) the EU research needs related to this topic,
  - 4) the expertise available within EFI and its Regional/Thematic Centres;
  - 5) relevant links to other disciplines.
- contribution to deliverable A2.2: draft work programmes that can be submitted to external scientific evaluation, draft report on funding strategies for forest research networks, a draft report on links to industry and end users, and a draft report on strategic alliances to neighbouring disciplines
- contribution to deliverable A2.4: as part of the final report, to prepare work plans relevant to 6<sup>th</sup> FP, including links to other disciplines, to industry and end-users, and a report on regional funding sources.

**Timetable:**

Deliverable	Timetable
-------------	-----------



A2.1	beginning of Month 2
A2.2	Month 6
A2.4	Month 11

### **Partner 6**

#### **University of Freiburg, Institute of Forest Growth (IWW)**

Bertoldstraße 17

79085 Freiburg, Germany

Tel. +49 761 203 3737, Fax +49 761 203 3740

Email: instww@uni-freiburg.de

#### **Project team:**

Prof. Heinrich Spiecker, Faculty of Forestry, Albert-Ludwigs-University Freiburg, Freiburg (Germany),

Diplomforstwirt Jörg Hansen, Faculty of Forestry, Albert-Ludwigs-University Freiburg, Freiburg (Germany)

Prof. Dr. Hubert Sterba, Faculty of Forest and Timber Science, Agricultural University, Vienna (Austria)

Prof. Dr. Hubert Hasenauer, Faculty of Forest and Timber Science, Agricultural University, Vienna (Austria)

Prof. Jiri Kulhavy, Faculty of Forestry and Wood Technology, Mendel University of Agriculture and Forestry, Brno (Czech Republic),

Prof. Konstantin von Teuffel, Forest Research Institute of Baden-Württemberg, Freiburg (Germany),

Partner 6 participates in Tasks A1 and A2.

### **Workplan**

The main contribution of partner 6 is to workpackage A2. It will also participate in the open seminar (Workpackage A1).

#### Workpackage A2

Within Workpackage A2, IWW will undertake the following tasks:

#### In general, Partner IWW will:

- participate in the three workshops in co-operation with the co-ordinator
- participate in the design, information compilation and other preparatory work for the three workshops
- co-ordinate the networking and information flow among the participants of its own network.
- contribute to the workshop reports
- contribute to the dissemination of the results

More specifically, IWW will undertake the following tasks:

**In A2.1 Workshop 1 ‘State-of the art and research needs’:**

- to investigate existing capacities and research needs in Europe concerning the field of expertise of partner 6, relevant from the point of view of the 6<sup>th</sup> Framework Programme
  - to chart the available expertise within the Regional/Thematic Centres as well as EFI headquarters or elsewhere
  - to start planning research and work programmes to meet the emerging research needs
- To prepare a part of the report of Workshop A2.1, by describing
- 1) the existing research capacities in Europe in its field of expertise
  - 2) their funding structure
  - 3) the EU research needs
  - 4) the expertise available within EFI and its Regional/Thematic Centres
  - 5) relevant links to other disciplines.

**In A2.2 Workshop 2 ‘Drafting the options for the future’:**

- to continue the design of work programmes to meet the research needs
- to discuss the availability of regional funding sources to the research
- to discuss links to industry and end-users
- to outline relevant work programmes that can be submitted to external scientific evaluation, including a draft report on funding strategies for forest research networks, a draft report on links to industry and end users, and a draft report on strategic alliances to neighbouring disciplines.

**In A2.4 Workshop 3 ‘Options for the future’**

- to present the work plans developed in the framework of the project
- to prepare a part of the final report, consisting of work plans relevant to 6<sup>th</sup> FP, including links to other disciplines, to industry and end-users, and a report on regional funding sources.

**Person months:**

Workpackage	Person-months
A2	2

**Deliverables**

- contribution to deliverable A2.1:
  - 1) report the existing research capacities in Europe in the fields of expertise of partner 6
  - 2) their funding structure
  - 3) the EU research needs related to this topic,
  - 4) the expertise available within EFI and its Regional/Thematic Centres
- contribution to deliverable A2.2: draft work programmes that can be submitted to external scientific evaluation, draft report on funding strategies for forest research networks, a draft report on links to industry and end users, and a draft report on strategic alliances to neighbouring disciplines
- contribution to deliverable A2.4: as part of the final report, to prepare work plans relevant to 6<sup>th</sup> FP, including links to other disciplines, to industry and end-users, and a report on regional funding sources.

**Timetable:**

Deliverable	Timetable
A2.1	beginning of Month 2

A2.2	Month 6
A2.4	Month 11

## **Participation by representatives of industry, end-users and other stakeholders**

The aim of this accompanying measure is to take into account the needs of the end-users of the research by involving representatives of the forest industries, wood-users and other stakeholders to the elaboration of the work programme. This will be implemented at all levels of the project:

### Workpackage A1:

The open seminar will be the forum for all forest stakeholders to discuss the research needs in the light of the 6<sup>th</sup> Framework Programme. EFI will announce the event broadly, and the target groups who will be invited to participate are:

- the forest research community: EFI's member organisations and other research institutes and university faculties in Europe
- relevant EU bodies (DG Research, DG Agriculture, DG Environment, DG Enterprises), European Economic and Social Committee
- forest industries
- representatives of relevant other disciplines, e.g. within the field of global change research, information technology.
- environmental NGOs., such as WWF, Greenpeace.

(see also list below)

### Workpackage A2:

Representatives of industry and end-users will also be invited (to a limited extent) to participate in the workshop series, together with representatives of other disciplines as seen relevant by the participants of the project. In addition, the views of industry, end-users and other stakeholders will be charted by means such as email questionnaires and phone calls by the project partners.

The following organisations representing industry and end-users have already accepted to participate as representatives of end-users to the elaboration of the work programmes envisaged under workpackage A2.

Confederation of European Paper Industries (CEPI)  
Forest Director Mr. Bernard de Galembert  
250 Avenue Louise  
1050 Brussels, Belgium  
Fax: +32 2 646 8137

Tel: +32 2 627 4927  
b.galembert@cepi.org

CEI-Bois  
Hof-ter-Vleestdreef 5 b. 4  
1070 Brussels, Belgium  
Fax: +32 2 556 2595  
Tel: +32 2 556 2585  
Email: [info@cei-bois.org](mailto:info@cei-bois.org)  
Secretary General: Mr. Guy van Steertegem

Confederation of European Forest Owners (CEPF)  
Rue du Luxembourg 47-51  
1050 Brussels, Belgium  
Fax: +32 2 219 2191  
Tel: +32 2 219 0231  
Email: [cepf@planetinternet.be](mailto:cepf@planetinternet.be)  
Secretary General: Ms. Natalie Hufnagl

6-7 external experts will be invited to each workshop (the most important of them being the first one on the state-of-the art). Research needs will be charted also via email/interviews.

The target group for charting research needs include e.g. the following organisations/names. The same organisations will also be invited to the open seminar (A1):

**Private forests owners, e.g.**

- + PEFC : pan european forest certification
- + USSE, Union des sylviculteurs de sud de l'Europe

**National Forests, e.g.**

- + Finnish Fores and Park Service
- + Office National des Forêts,
- + Forestry Commission UK

**Municipal Forests, e.g.**

European Federation of Forest Municipalities.

**Forest administrations, e.g. in Hungary, Finland, Portugal, Austria**

**Forest industries**

e.g. EUROWOOD, INNOVAWOOD, IKEA, Stora-Enso,  
Forest Industry Associations,  
AFOCEL

**Entrepreneurs**

E.g. European Network of Forest Entrepreneurs

**International bodies**

FAO, EEA, IEA (International Energy Agency)

In addition, the research needs will be charted by contacting the network of existing research partners.

Workpackages B1 and B2:

The co-ordinators of subtasks B1 and B2 will invite representatives of industry, end-users and other stakeholders to their regional level meetings.

Task B1: The thematic groups (biotechnologies, forest management, new wood-based products) will involve ‘experts’ from research organisations (forest ecology, wood science, and socio-economics) and forest industry (mainly representatives from timber and wood products industry, pulp and paper companies, private and public forestry organisations, forest owners associations). The four regional workshops will provide a platform for developing the debate between the ‘experts’ thematic groups and stakeholders, and for involving end-users in the whole process. Organisation of those workshops at the regional level by IEFC four regional antennas will facilitate participation of end-users. The overall task B1 is an open process which will facilitate inputs from industry and end-users at an interregional level.

## 4. Project Management and Coordination

EFI co-ordinates the project and is the sole contractor with the EU. EFI concludes subcontracts with the other participants of the project on specific tasks.

The overall responsibilities and participation in each subtask of the project are summarised in the following table:

Task	Responsible partner	Other participants in the subtask
A1	1 EFI	All participants (participation in open seminar)
A2	1 EFI	All participants (participation in workshops)
B1	2 IEFC	On a voluntary basis
B2	3 CTFC	On a voluntary basis
<b>Overall co-ordination</b>	1 EFI	

EFI carries out the overall co-ordination responsibilities in the project, including financial administration and reporting to EU, and is the co-ordinator of tasks A1 and A2. Tasks B1 and B2 are co-ordinated by Partner 2 (IEFC) and Partner 3 (CTFC) respectively.

The project co-ordination will be implemented through

- Management meetings  
 Management meetings between all participants will be organised during each workshop of Task A2, i.e. in Months 1, 5 and 10. The co-ordinator will prior to each such meeting contact all participants for issues to be taken up at the administrative meeting. Records are kept of the management meetings.
- Email.  
 Between the meetings, preparatory work will be carried out through report outlines, questionnaires etc. circulated through email.

Task A2 (series of three workshops):

Each workshop will consist of

- invited keynote addresses
- groupwork: 3-6 groups at each workshop moderated by partners
- plenary session wrapping up the results of group work.

Each workshop will be carefully designed to ensure that the objectives are achieved. The partners will carry out “homework” according to the instructions given by the co-ordinator, to prepare for each workshop, as well as after the workshops as necessary.

Partner 2 (IEFC) will coordinate the task B1 project team and the principal scientific personnel involved through 3 management meetings organised during thematic groups

meetings and workshops (months 2, 5 and 8). The task coordinator will use email facilities for preparing meetings and reports.

Task B2 will be internally coordinated from Partner 3 (CTFC). The coordinating team is all associated to the Centre, which makes the management task very simple. However, the other parties (research centers, industry, administration, associations, and other end-users) will be involved in the preparation of the specific agenda of each workshop and the list of people to be invited. For that, e-mail, phone and fax contacts will be used. The progress will be made available “on-line” at the CTFC web page.

## **5. Exploitation and Dissemination Activities**

The project will improve and advance the co-ordination of forest research and development in Europe. Therefore, the exploitation and dissemination activities of the project will make the results achieved and knowledge gained to the disposal of the European forest research community as widely as possible. The most natural channel for this is the EFI membership network, which covers the majority of European forest research units. The following activities are envisaged:

- Publications. The keynote addresses of the open seminar (Work package A1), and the final report based on the workshop of workpackage A2.4 ‘Options for the future’ will be published as a book. A final report following the FP5 guidelines will be submitted to EU.
- EFI News: The seminar, workshops, topics of the project and its result will be largely featured in the European Forest Institute’s newsletter EFI News, which appears twice a year and is circulated to app. 5000 forestry professionals, including industry, in Europe and beyond.
- A brief summary intended for quick readers will be made based on the final results, and distributed to forest authorities, EFI members, representatives of industries, end-users, etc. in Europe. This report will also be placed on EFI’s website.
- IEFC and CTFC websites will be used for facilitating access and dissemination of task B1 and task B2 reports and workshop discussions at interregional level
- Press releases. Press releases in English, French, Spanish and German will be issued (i) at the project launch (ii) Before the open seminar (Workpackage A1), and (iii) when the final results of the project are published. These are widely distributed to European forest and other media. A Press Conference will be held during the open seminar (Workpackage A1).
- A more detailed exploitation plan will be made at the final stage of the project, including the planning of further activities after the project completion. These plans may include planning of further series of workshops, aiming to facilitate the networking of the European forest research community and its links to the EU. EFI

also undertakes to serve as an information provider to the European forest research community, first and foremost to its members, on actual and relevant developments in the EU framework programme.

Basically, the results of this Accompanying Measure are public. Whenever necessary, intellectual property rights that arise will be taken into account through separate agreements. The overall aim is to activate the forest research community to utilise the results achieved during the project.

## **6. Ethical Aspects and Safety Provisions**

There are no ethical issues or safety risks in this proposal.